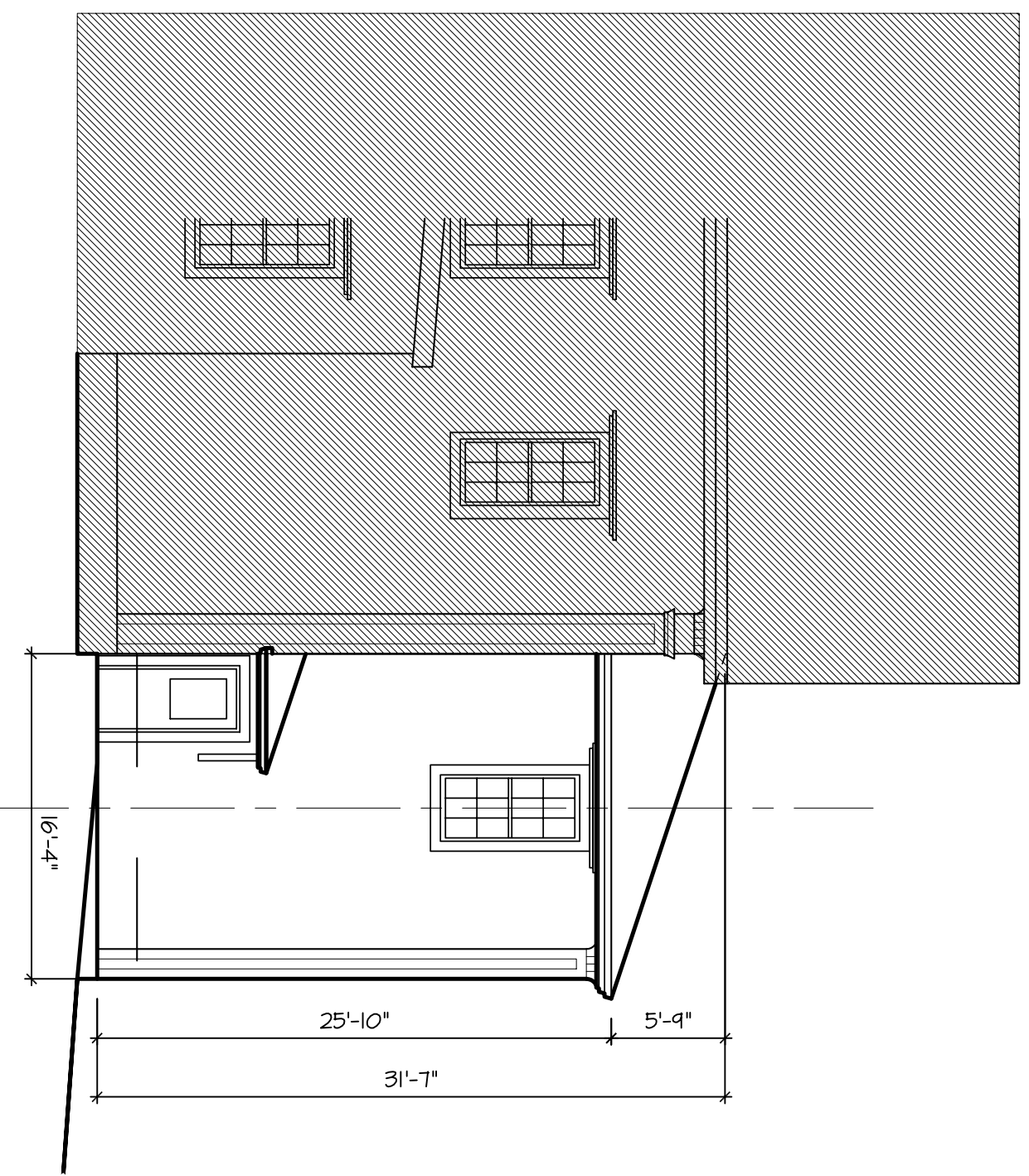
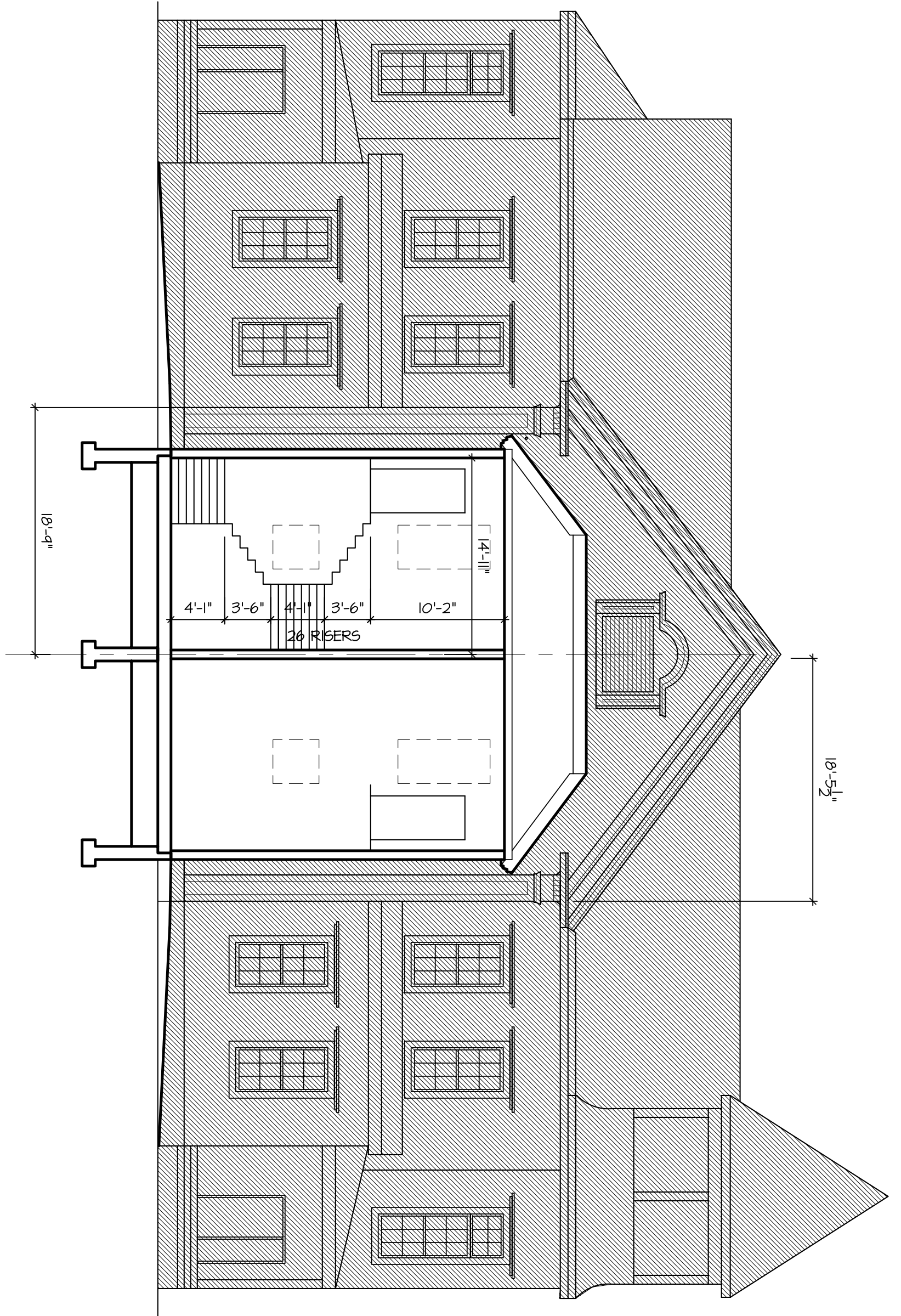


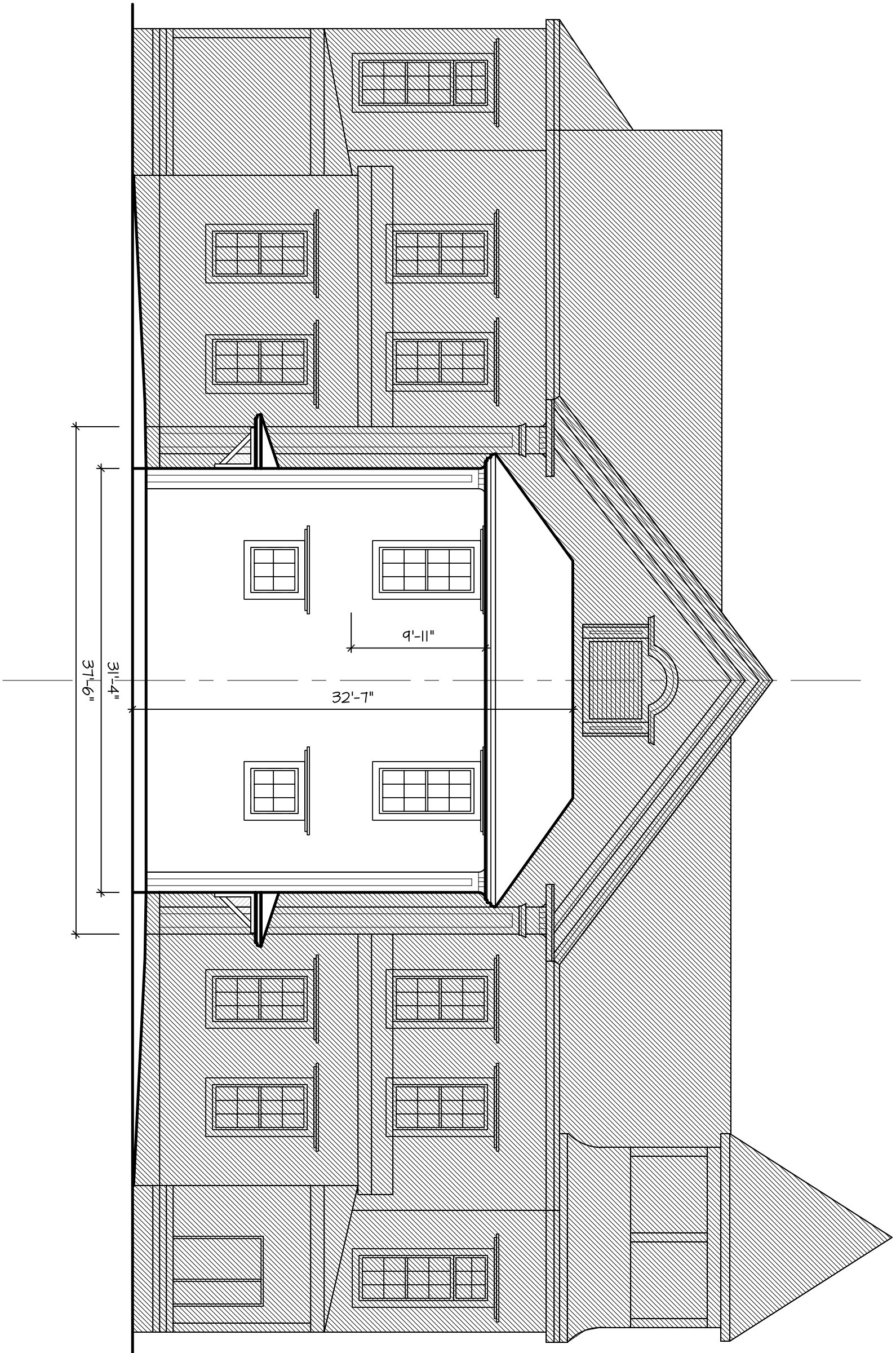
1 North-South Section
1/8" = 1'-0"



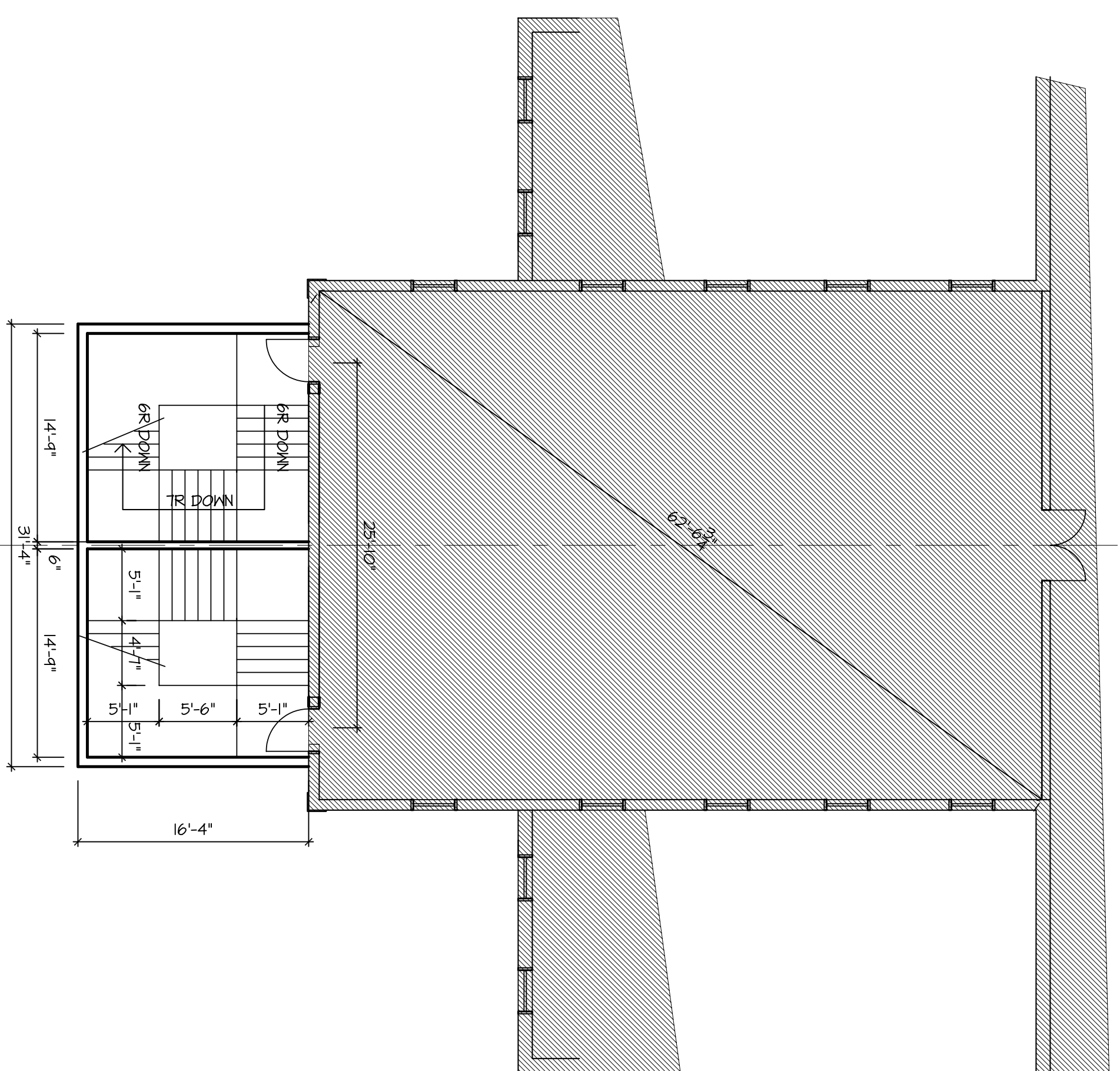
4 East Elevation
1/8" = 1'-0"



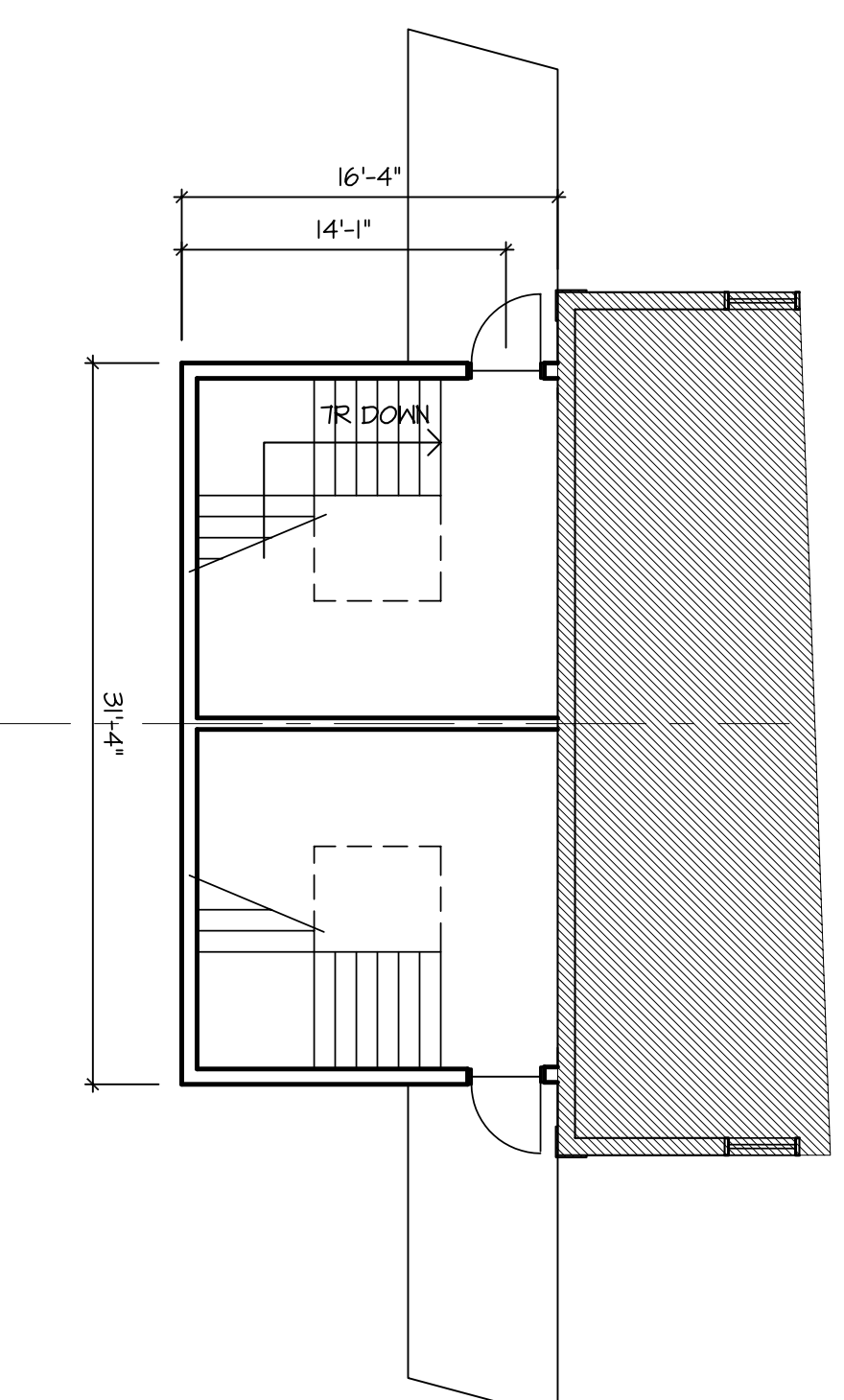
2 East-West Building Section
1/8" = 1'-0"



5 Front Elevation
1/8" = 1'-0"



6 2nd Floor Stair Plan
1/8" = 1'-0"



7 1st Floor Stair Plan
1/8" = 1'-0"

NOT FOR
CONSTRUCTION

A1

Layout of New Exit Stairs
Nancy Loud School
Rochester School District Rochester, NH

DATE: 04-22-10
SCALE: AS SHOWN
PROJ. NO.: 1011
DRAWN BY: JH / HF

FRANK P. MARINACE / ARCHITECT, P.A.
BOX 429 NEW HAMPTON, NEW HAMPSHIRE 03256 TELEPHONE (603)744-5144